



Table of Content



Intro Pages

Table of Content 2

About Us 4

Services

Single Family Homes 8

Mid-High Density 15

Modular Construction 29

Landscape 46



About Us



We Offer Alternative Solutions in Materials and Construction.

We are an Abuja based group of Architects, Interior Designers, Artists, Urbanists, Landscape Professionals, Sustainability and Environment Enthusiasts, Building Material Experts, Researchers and Innovators. The group is currently involved in a variety of projects, ranging from mid-high density residential development, Luxury Villas, Garden and Landscaping, to modular construction in all scales and sectors.

At the heart of AvantGardian projects, is a unique approach to design that is committed to delivering innovative, sustainable, technologically advanced and aesthetically pleasing products. Our designs aim to create spaces with human experiential quality, spaces that improve overall quality of life for users while meeting all technical requirements, spaces that give the feeling of happiness and satisfaction to both client and users.

Our highly collaborative, research-oriented approach seeks to provide solutions to contemporary architectural and urban issues, by involving clients, stakeholders and experts from a wide range of fields at the onset of our creative process. Our inclusive design process leads us to deal with issues ranging from sustainability, environment, materials and tectonics, to providing reusable/modular solutions to the ever-evolving contemporary building needs.

At AvantGardian, we once again find the freedom of thought and ideas to create remarkable, innovative architecture that changes the surface of our environment to better fit contemporary life.



Directors



Khalil Halilu

From selling ice blocks to neighbors to founding West Africa's First Eco-friendly Technology hub, Khalil Suleiman Halilu is a living testament that anything can be achieved if you give your mind to it. Khalil is a dynamic, creative, intelligent, hard-working entrepreneur and a firm believer in the power of technology to impact and improve livelihood in developing countries. His dedication, vision and principles set him apart from his peers.



Wada Kawu

With over 30 years experience in business and entrepreneurship, Wada is well versed in identifying potential business opportunities as well as challenges in the Nigerian and West African context. His savviness and business acumen are exemplified by his renowned success in the automobile industry.



Ahmad Nasir

Ahmad is a well educated young professional that is driven by core values of Sustainability. His education in Agricultural Engineering and Plant Biotechnology coupled with his participation with non-profit organizations that provide young people with leadership development, cross-cultural and global volunteer experiences have equipped him with the desired skills to spearhead the Landscape, Garden, and Green Architecture integration at AvantGardian.



Sani Garba

A veteran and accomplished businessman with wealth of experience in numerous fields - Banking and Finance, Telecommunication Technology, Real Estate and Construction, Agriculture, Human Resource Organization, Clean and Renewable Energy, Mohammed Sani Garba is well trained, home and abroad, to deal with business challenges arising from various sectors.

Services



LANDSCAPE

The natural environment nurtures the built environment. Our landscape projects, which range from rooftop parks to streetscapes aim at improving human health and wellbeing.



SINGLE FAMILY HOMES

For the privacy inclined individuals seeking spacious living areas to raise their family, our single-family homes are key.



MODULAR CONSTRUCTION

Modularity is the go-to venture for those that value sustainable construction processes and seek to enjoy its cost and time saving benefits.



MID-HIGH DENSITY

Perfect for urban living, our medium to high density homes range from terraces to apartment blocks.

TM



Single Family Homes

For the privacy inclined individual seeking spacious living areas to raise their family, our single-family homes are key. We design a variety of family-friendly homes alongside each member of the family to ensure the family's specific wants and unique needs are met.

7 Bedroom Villa, Guzape

Privacy, comfort and equity were key in designing this home for a family of five (5). The villa features a home office, separate entrances for its residents and guests, multiple living rooms and kitchenettes, a gym and a pool. Its three levels cantilever and interconnect to provide the voids and links needed for a subtle separation of public from private spaces. The home's angular voids and links also create an opportunity for the building to wrap around a shaded courtyard which is overlooked by an entire expanse of well-shaded glazing.





7 en-suite
bedrooms



central
security



swimming
pool



BQ





INNOVATIVE - SUSTAINABLE - DEVELOPMENT

6 Bedroom Villa, Kano

Hidden balconies and entrances define this four (4)-leveled six-bedroom home. From the exterior, the balconies that wrap around the building's entirety are not evident. Yet they serve to maintain a consistent connection between the building's interior and exterior spaces. Emphasis is also placed on connectivity between multiple functions by having a central atrium that supports vertical circulation and an ambulatory horizontal circulation. Similarly, dynamic connectivity is portrayed by the linkage of a library, living room, home office and gym to the master bedroom on the building's second floor.





lounge
area



central
security



3D
wall



swimming
pool



INNOVATIVE - SUSTAINABLE - DEVELOPMENT



Mid High Density

Perfect for urban living, our medium to high density homes range from terraces to apartment blocks. Their multiple levels, adjacencies and shared infrastructure allow for maximum utilization of space while maintaining their occupants' lifestyles and promoting a sense of community.

Regal Nest

Designed with utmost attention to the dynamics between light and shadow, outdoor and indoor, as well as public and private, these five (5) units of five-bedroom terraces feature intricate shading devices that define each unit's form and embody the regal yet elegant majesty of the homes.



The minimalist and contemporary yet intricately ornamented interior finishes also complement the homes' exterior treatment. This ensures that a sense of laid-back and tranquil luxury is retained throughout the homes.



parking
(2 cars +)



reinforced
glass



green
areas



INNOVATIVE - SUSTAINABLE - DEVELOPMENT

5 Bedroom Terraces, Jahi

The protrusions and corner windows of these five (5) units of five-bedroom terraces serve to maximise daylighting and convey a sense of oneness with the outdoors. At the same time, the first-floor balconies are pushed back into the building to maintain a semblance of privacy from the adjoining terraces and ensure shading is adequately extended by the protruding forms. The top floor of each terrace is dedicated to two bedrooms belonging to the master and the madame, as well as a balcony atop the protruding living area on the first floor.





2 master
bedrooms



central
security



swimming
pool



BQ



6 Bedroom Terraces, AYA

This set of three terraces is a manifestation of the marriage between form and function. Each terrace features six (6) en-suite bedrooms, three (3) living rooms and one boys' quarters.



Special consideration is made for the flow of users through the individual terraces from public to private spaces, both horizontally and vertically. The overhanging balconies also shade the strategically situated car porches and side accesses which enhance the connectivity between indoor and outdoor while maintaining safety and security.



parking
(2 cars +)



reinforced
glass



green
areas



INNOVATIVE - SUSTAINABLE - DEVELOPMENT

Labana Luxury Apartments

Situated within one of the prime locations of Lagos State, this residential tower of twelve (12) floors offers residents high-end luxurious 4-bedroom apartments with high quality finishes and services.



The Tower's radial layout ensures residents have vantage views of the surrounding context and maximises daylighting and ventilation across each apartment. The services within the Tower, which encompass swimming pools, a children's play area and a squash court, also support luxury through communal living, comfort and tranquility.





water
supply



central
power



green
areas



playground





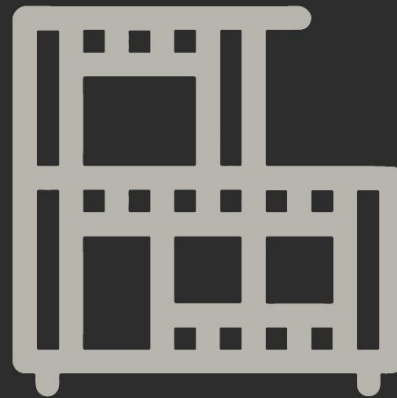
INNOVATIVE - SUSTAINABLE - DEVELOPMENT



INNOVATIVE - SUSTAINABLE - DEVELOPMENT



INNOVATIVE - SUSTAINABLE - DEVELOPMENT



Modular Construction

Modularity is the go-to venture for those that value sustainable construction processes and seek to enjoy its cost and time saving benefits. With innovation being at the core of our practice, our modular projects take on the challenge of using unconventional building materials and configurations to bring vibrancy and character to the built environment while catering to diverse building uses.

Rolling Automobiles | AbujaCar

The rapid manifestation of this building as a display room for about fifteen (15) cars is linked to the building materials that form its structure, fenestration, and cladding. The building's materiality, function and rigid form all supported a short construction period of six (6) months.



A conscious decision to have minimal treatment on the building's façade and interior space also ensures that focus is maintained on the cars displayed within it, thereby enabling the building to live up to its function as a showroom.



parking
(20 cars +)



reinforced
glass



green
areas



central
power

Construction



The Cans Phase II

Designed to serve as a technology and innovation hub, this container park which is made up of interconnected platforms and a variety of spaces, brings the element of play to the center of work.



Its playful configuration of mixed-use functions alongside core-tech services provides a vibrant, conducive and relaxing environment for the tech community to access services that stimulate innovation. The development's use of modular construction methods also speaks to the flexibility associated with innovation and allows for future expansion and reconfiguration of spaces within the hub.



water
supply



central
power



green
areas



insulated
panels



An architectural rendering of a modern building complex named 'The CANS'. The building features a two-story design with large glass windows and dark metal frames. A central courtyard is paved with light-colored tiles and contains several wooden benches. A lush green lawn with young trees is on the left. People are shown walking and sitting, giving a sense of scale and life to the space. The sky is blue with scattered white clouds. The text 'The CANS' is displayed in large, white, sans-serif capital letters on the upper level of the building's facade.

The CANS

INNOVATIVE - SUSTAINABLE - DEVELOPMENT



INNOVATIVE - SUSTAINABLE - DEVELOPMENT

Cafe by AbujaCar

This shed-like indoor-outdoor café juxtaposes the Rolling Autos by Abuja Car. The Café's brown tones and wooden cladding serve as the perfect contrast to the grey, metallic and glazed car showroom.



This contrast in building materials, though aimed at portraying the differences in functionality, also retains the Abuja Car identity by maintaining straight, clean and rigid forms for the structures. Whereas the Rolling Autos by Abuja Car encloses its activities behind cladding and glazing, the Café by Abuja Car creates a sense of porosity through its use of grills that wrap around the building while simultaneously shading it.



parking
(20 cars +)



reinforced
glass



green
areas



central
power

Construction



Wada Luxury Autos

This car showroom embodies modularity both within its interior layout and its exterior make-up.



The building is completely void and its support and private spaces are relegated to its shorter sides while providing an expansive vantage from which to view the twenty (20) cars on display within it. Its modularity enhances the flexibility of the showroom and allows for diverse car arrangements and display features to be situated within it.





parking
(20 cars +)



reinforced
glass



green
areas



central
power



INNOVATIVE - SUSTAINABLE - DEVELOPMENT



INNOVATIVE - SUSTAINABLE - DEVELOPMENT

Rolling Bricks Site Office

This modular structure proves that even a site office can be sleek and elegant. The site office takes the Rolling Brick logo and brings it to life through the transformation of a 20-foot shipping container.



Its brown-coloured, two-levelled flat roof contrasts the white painted corrugated metal walls, extends horizontally, and transforms vertically into a defining form for the office.



parking
(20 cars +)



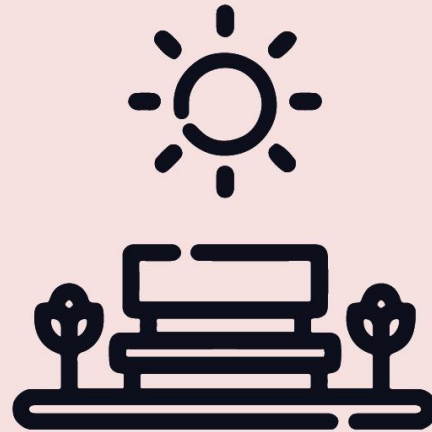
reinforced
glass



green
areas



central
power



Landscape

The natural environment nurtures the built environment. Our landscape projects, which range from rooftop parks to streetscapes aim at improving human health and wellbeing. We ensure the synergy between outdoor and indoor is utilized to provide outdoor living areas that impact on the quality of life of a building's occupants.

Regal Nest Gardens

Located on the corner end of the Regal Nest terraces plot, this mini-communal garden serves as a tranquil getaway for the residents of the terraces.



Its fluid layout creates a balanced contrast with the rectilinear forms of the buildings that border it. However, it still maintains the laid-back and tranquil regal theme embodied by the treatment of the buildings' facades through its use of intricately patterned wall tiles.



pathway
lights



green
areas



polished
wood





Phone: +234 (0) 809 777 0077
E-Mail: hello@avantguardian.com

Address: 18, Labana Court, Jereton Mariere Street,
Apo Legislative Quarters, Apo, FCT, Abuja.